

### 03. Thermal analysis of tin-lead alloys. 2010

#### Important concepts

phase, chemical constituents, degree of freedom, phase rule, melting point, boiling point, eutectic point, eutectic composition, eutectic temperature, phase diagram, intensive and extensive variables, chemical potential, phase equilibrium in terms of chemical potential, *Newton's* cooling law, cooling curves, mass percentage, molar fraction.

#### Experimental Methods:

The data for the construction of equilibrium diagrams are determined experimentally by a variety of methods, the most common methods are:

- Metallographic Methods
- X-ray Diffraction Technique
- Thermal Analysis

**Metallographic Methods** This method is applied by heating samples of an alloy to different temperatures, waiting for equilibrium to be established, and then quickly cooling to retain their high-temperature structure. The samples then examined microscopically. This method is difficult to apply to metals at high temperatures because the rapidly cooled samples do not always retain their high-temperature structure, and considerable skill is then required to interpret the observed microstructure correctly.

**X-ray Diffraction Technique** This method is applied by measuring the lattice dimensions and indicating the appearance of a new phase either by the change in lattice dimension or by the appearance of a new crystal structure. This method is very precise and very useful in determining the changes in solid solubility with temperature.

**Thermal Analysis** This is by far the most widely used experimental method. It relies on the information obtained from the cooling diagrams. In this method, alloys mixed at different compositions are melted and then the temperature of the mixture is measured at a certain time interval while cooling back to room temperature.

A cooling diagram for each mixture is constructed and the initial and final phase change temperatures are determined. Then these temperatures are used for the construction of the phase diagrams.

#### 1. Objective

The objective of this laboratory is to determine a portion of the tin-lead phase diagram using thermal analysis.

#### 2. Background

The **Degrees of Freedom** ( $F$ ) is the number of independent intensive variables (i.e. those that are independent of the quantity of material present) that need to be specified in value to fully determine the state of the system. Typical such variables might be temperature, pressure, or concentration.

If a system is constituted more than one **phase**, a single phase is immiscible to the other phases and separated from other phases by phase boundary. In a liquid or solid state, it is not necessary for a single phase to be separated spatially, but it can be distributed in the other phase, e.g. the oil phase in an emulsion. A phase may of course contain several chemical constituents. The number of phases is represented in the Gibbs phase rule by  $P$ .

The **Chemical Constituents** are simply the distinct compounds (or elements) involved in the state equations of the system. The number of these is represented as the components ( $C$ ) of the system if there are no chemical equilibria, stoichiometric and electroneutrality conditions to diminish the number of components.

The phase rule

$$F = C - P + 2$$

1.

in this form involves two intensive variables the pressure and temperature. When pressure is constant and the partial pressure of components are very low (as in the case of tin-lead alloy) the phase rule is given

$$F = C - P + 1 \quad 1a.$$

In a system containing two or more components the lowest melting point can be found at the **eutectic composition**. The components of such a system form homogeneous liquid phase, but the solid phase contains pure one component crystalline phases of different materials (mechanic mixture).

Lead and antimony are completely soluble in the melt, while their crytallites form a *mechanic mixture*. The melting point diagram of Pb-Sb-alloys corresponds to the type represented in *Figure 1*. Cooling the melt *a* the component *A* starts to crystallize at the temperature  $T_K(a)$ . In this case of decreasing temperature the composition of the melt is described by the curve 1. A melt *b* segregates crystallites of the component *B* when the temperature  $T_K(b)$  is reached. The curve 2 describes the composition of the melt as a function of temperature. The curves separating the fields of *A* + liquid from liquid and *B* + liquid from liquid are termed *liquidus curves*. The horizontal line separating the fields of *A* + liquid and *B* + liquid from *A* + *B* all solid, is termed the *solidus*. The intersection point *E* of the curves 1 and 2 is called eutectic point. The residual melt of any alloy of this type solidifies at temperature *E* (eutectic temperature) like a uniform metal. At the *eutectic point* in this two component system, all three phases, that is liquid, crystals of *A* and crystals of *B*, all exist in equilibrium. Note that the eutectic is the only point on the diagram where this is true.

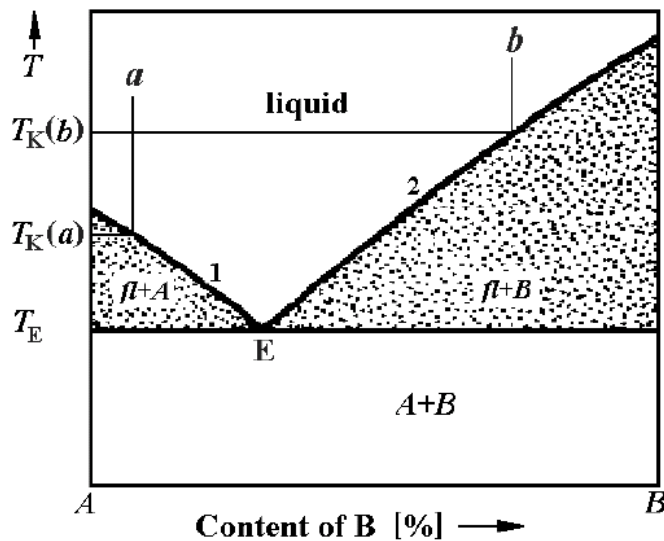


Fig. 1. Melting point diagram of a mechanic heterogeneous mixture mixable in a melt.

Lead and tin form alloys are very similar to lead and antimony. Figure 2 shows the melting point diagram. If the lead content in the melt is smaller than  $x_1 = 5\%$  or

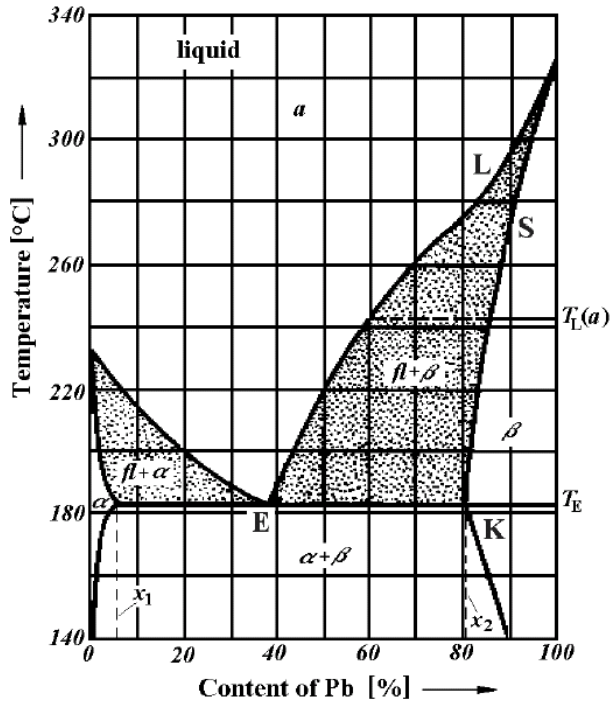


Fig. 2. Melting point - composition diagram of a Pb-Sn alloy

higher than  $x_2 = 80.5\%$  (weight percent) mixed crystallites  $\alpha$  or  $\beta$  are formed. We do not study mixtures below 5% or between 80.5% and 100% Pb.

### Cooling curves

Cooling curves are evaluated at different compositions of Pb-Sn mixtures in order to construct phase diagram similar to which is shown in figure 2.

The temperature  $T$  of a Pb-Sn alloy, which is left to itself after melting, initially can be described by the *Newton's* cooling law

$$\frac{dT}{dt} = -k(T - T_r) \quad 2.$$

The cooling rate  $dT/dt$  is proportional to the temperature difference  $(T - T_r)$ , where  $T_r$  is the constant room temperature. The factor  $k$  is called cooling constant. The integration in the time interval between  $\tau = 0$  and  $\tau = \tau$  gives

$$T_1 - T_r = (T_0 - T_r) \cdot e^{-k\tau} \quad 3.$$

The temperature of a Pb-Sn alloy is  $T_0$  at start and  $T_1$  after time  $t$  elapsed. If the composition is not the eutectic one the segregation of solid Pb-Sn mixed crystallites starts at certain temperature  $T_L$ . Due to the resulting solidification heat the cooling rate decreases, i.e., the cooling curve exhibits a slight discontinuous course at  $T_L$  (see Figure 3).

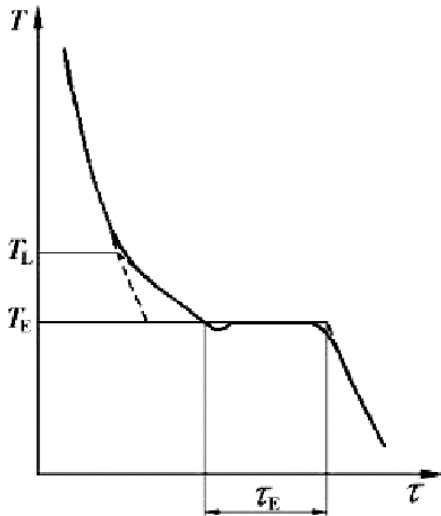


Fig. 3 Temperature-time diagram of a Pb-Sn alloy

At  $T_E$  the melt has the eutectic composition and solidifies like a pure metal. The temperature of the melt remains constant during the time  $t_E$ . The horizontal section of cooling curve can be predicted by equation 1a. For a eutectic transformation in a binary alloy  $P = 3$ ,  $C = 2$ , and so  $F = 0$ . The temperature should remain constant until the last drop of liquid melt has been solidified. The completely solidified alloy decreases in temperature according to equation 3. The  $k$  values of the melt and the solid alloy agree almost. If  $T_L$  is higher than the melting temperature of tin, the composition of the alloy can be determined clearly using Figure 3. If  $T_L$  is smaller than  $232^\circ\text{C}$ , there are two possible concentrations according to the melting point diagram.

### Cooling curves and phase diagram

By observing the cooling curves of several samples of an alloy across a range of compositions, the shape of the liquidus curves and the eutectic temperature of the eutectic binary system can be determined (Figure 4). Cooling curves can be also used to investigate all other types of transformations, for example, those within the solid state where there may be a change in the crystal structure.

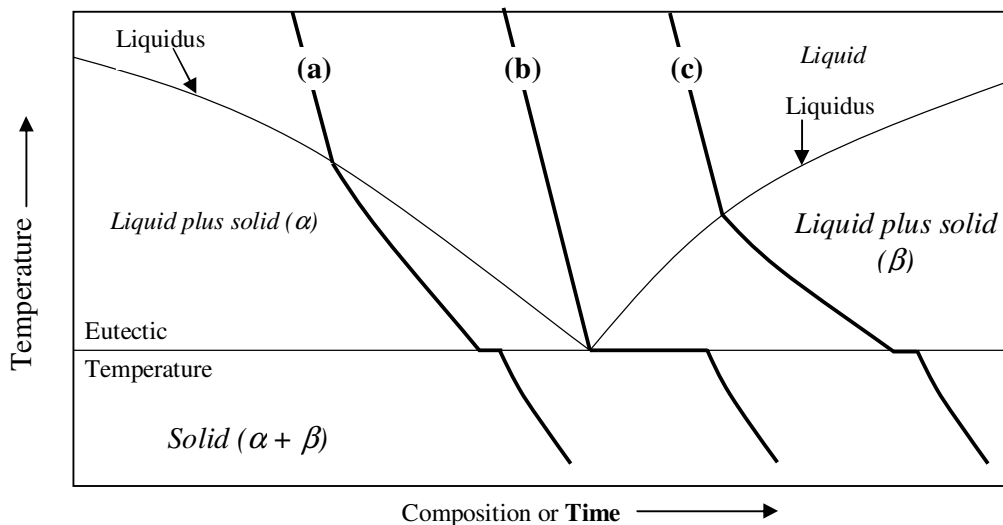


Figure 4: Ideal cooling curves for: (a) hypoeutectic alloy, (b) eutectic alloy and (c) hypereutectic alloy, superimposed on a portion of a eutectic phase diagram.

### 3. Procedure and evaluation

The data of cooling curves at different Sn/Pb compositions are given in files. A program is used for the construction of phase diagram from cooling curves. (see also Users manual)

1. A cooling curve exhibits local maximum or breaking point (discontinuous course) referring to the phase transition temperature and plateau section that is identical to eutectic point. We fit straight lines before and after the observed breaking point, and the intercept of straight lines gives the correct value of melting point in mV or simply read the value of local maximum. The temperature of eutectics is obtained from the averaging of several data points in the plateau range.

#### 2. Converting thermovoltage to temperature.

A thermocouple is applied to the measurement of temperature time curve of different tin-lead alloys. The voltage temperature dependence of the thermocouple can be approximated by a linear function in the form

$$T = a + b \cdot U_{\text{therm.}} \quad 4.$$

where  $U_{\text{therm.}}$  is the thermocouple reading and  $T$  is the temperature can be calculated by using fitting parameters  $a$  and  $b$ . In order to determine the intercept and slope of equation 4 we use calibrating data given in table 1. We apply for the table systems of well known phase transition temperatures, melting points.

| Equilibrium system | $U_{\text{therm.}} / \text{mV}$ | Melting point, $T / ^\circ\text{C}$ |
|--------------------|---------------------------------|-------------------------------------|
| Ice-water          | 0                               | 0                                   |
| Tin                | From evaluation                 | 231.9                               |
| Lead               | From evaluation                 | 327.4                               |
| Zinc               | From evaluation                 | 420.0                               |

You will find the thermovoltage values missing from table 1 by evaluating of heating and cooling curves of Zn and cooling curves of Sn and Pb.

Plotting the  $T$  vs  $U_{\text{therm.}}$  function and using a linear regression algorithm you will determine  $a$  and  $b$  constants of equation 4. This equation is applied to the conversion of thermovoltage data to temperature taken from cooling curves.

#### 3. Selecting folders and files

You may find a lot of folders optional in a file menu of the program. Each folder contains a complete cooling curve series, i.e. 14 cooling curves of different tin-lead composition given in mass percentage and 2 cooling curves of pure components. Another folder chosen from file menu contains cooling and heating curves for zinc. In the last two characters of file name the composition is encoded.

#### 4. Data manipulation

Choose a folder from file menu. Select a cooling curve from the folder content and use the straight line fitting program if there is a breaking point on the curve and find the average temperature in mV units belonging to the plateau. The 95% lead containing sample is an exception, it has no eutectic point. Repeat this procedure for the other 13 composition. Naturally, on the cooling curves of pure tin and lead you can not observe a eutectic point. Finally, you will have 16 data for constructing phase diagram and 13 eutectic point data, all of them are given in terms of thermovoltage. Calculate the average of 13 eutectic point data that will serve as the 17<sup>th</sup> datum of phase diagram.

Enter the melting point data in thermovoltage for table 1 and calculate constants of equation 4. Transform thermovoltage data to temperature. Construct phase diagram.

The data manipulation and graph construction is performed by the program Microsoft Origin ver. 3.5.

## Users Manual for SnPb program

Start the program by double clicking on the „SnPb” icon on the desktop!

We can see the menu:

**Elérési út:** „path” Path of the folder where the data files are.

You DO NOT have to change it.

**File beolvasása:** „Load data” Choosing this menu you can select a dataset. After selection press ENTER to load the files.

**Grafikon:** „Graph” Choosing this menu the graphs will be visualized. In the right upper corner you can see the number of the sample.

**Főmenü:** return to main menu.

**Egyenesillesztés:** line fitting, data reading mode. In this mode a cross-shaped cursor appears in the left upper corner. We can move the cross by the left-right arrows. You will see the coordinates of the actual data point at the bottom. (Pressing CTRL + arrows you can move faster.) We can read the local maximum and the plateau values.

**Determination of the break point:** line fitting. Pressing ENTER we can place points for the linear fitting (Place the 1<sup>st</sup> and 2<sup>nd</sup> points before the breaking point and the 3<sup>rd</sup> and 4<sup>th</sup> after it!). After placing the 4<sup>th</sup> point the program gives the equations of the lines and the coordinates of the intersection (y coordinate in mV in the right lower corner) automatically.

To exit this mode press ESC!

+ (on the numerical pad) : next graph

- (on the numerical pad) : previous graph

**Tengelyek:** „Axes” We can rescale the graphs (e.g. zoom in).

We do not use this menu.

**Vége:** „End”

Ki szeretne lépni? (I/N)      „Would you like to exit? (Y/N)”

### Minimum level tests (MLT).

MLT is devoted for practicing and preparing to labs at home, and its topical list covers the material of pre-lab questions.

#### MLT Q.and A

Q1. What are the thermodynamical conditions for phase equilibrium to be established?

A1. If the intensive variables  $T$ ,  $p$  and  $\mu$  of system containing more than one phase are constant in time the system is at equilibrium, i.e. the chemical potential of the components takes the same value in each phase. For a system containing two components A, B and two phases  $\alpha$ ,  $\beta$  it can be written

$$\mu_A^\alpha = \mu_A^\beta \quad \text{and} \quad \mu_B^\alpha = \mu_B^\beta$$

These two equation require the state determiners  $T$  and  $p$  are kept constant.

Q2. Define phase and component.

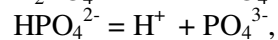
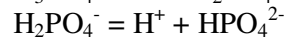
A2. A single phase,  $P$  is immiscible to the other phases and separated from other phases by phase boundary. In a liquid or solid state, it is not necessary for a single phase to be separated spatially, but it can be distributed in the other phase, e.g. the oil phase in an emulsion.

The chemical constituents are simply the distinct compounds (or elements) involved in the state equations of the system. The number of these is represented as the components ( $C$ ) of the system if there are no chemical equilibria, stoichiometric and electroneutrality conditions to diminish the number of components. The number of chemical components in every phase is restricted by existing equilibria. Therefore the number of chemical components equal to the number of species,  $S$  minus the number of reactions,  $R$  and the ionization equilibrium,  $I$

$$C = S - R - I$$

Example: phosphoric acid in aqueous phase,

Equilibria:



Reactions

$$3 + 1 = 4, \quad \underline{C = 2}$$

Number of species:  $\text{H}_2\text{O}$ ,  $\text{H}^+$ ,  $\text{H}_3\text{PO}_4$ ,  $\text{H}_2\text{PO}_4^-$ ,  $\text{HPO}_4^{2-}$ ,  $\text{PO}_4^{3-}$ ,

$$C = 6 - 3 - 1 = 2$$

The number of components are two.

Q3. Apply Gibbs phase rule and find the degree of freedom for a methanol liquid – methanol vapour closed system.

A3. The degree of freedom is  $F = C - P + 2$ , and accordingly  $F = 1$ . One variable: either temperature or vapour pressure can be varied without a change in number of phases.

Q4. Apply Gibbs phase rule and find the degree of freedom for a tin –lead alloy at the eutectic point at constant pressure.

A4. One of the intensive variables is taken constant:  $F = C - P + 1$ . We have three phases: pure crystalline lead, pure crystalline tin and the liquid phase; the number of components are two, , therefore  $F=0$ . No variable is to be changed without disappearing a phase.

Q5. Define the eutectic composition and eutectic temperature.

A5. The intersection point of two curves on the phase diagram is called eutectic point.

At the eutectic point in this two-component system, all three phases, that is liquid, crystals of component 1 and crystals of component 2, all exist in equilibrium. The eutectic composition has the lowest melting point.

Q6 The eutectic composition given in Pb mass percentage is 35%. Transform this concentration into molar fraction of Pb. Molar masses are  $M_{\text{Sn}}= 118.7 \text{ g/mol}$ ,  $M_{\text{Pb}}= 207.2 \text{ g/mol}$ .

A6. The molar fraction:  $x_{\text{Pb}} = \frac{n_{\text{Pb}}}{n_{\text{Pb}} + n_{\text{Sn}}}$

The composition: 35 g Pb, 65 g Sn. In moles:  $n_{\text{Pb}} = \frac{35}{207.2} = 0.169 \text{ mol}$ ,

$$n_{\text{Sn}} = \frac{65}{118.7} = 0.548 \text{ mol}$$

The molar fraction:  $x_{Pb} = \frac{0.169}{0.169 + 0.548} = 0.236$

2010tm